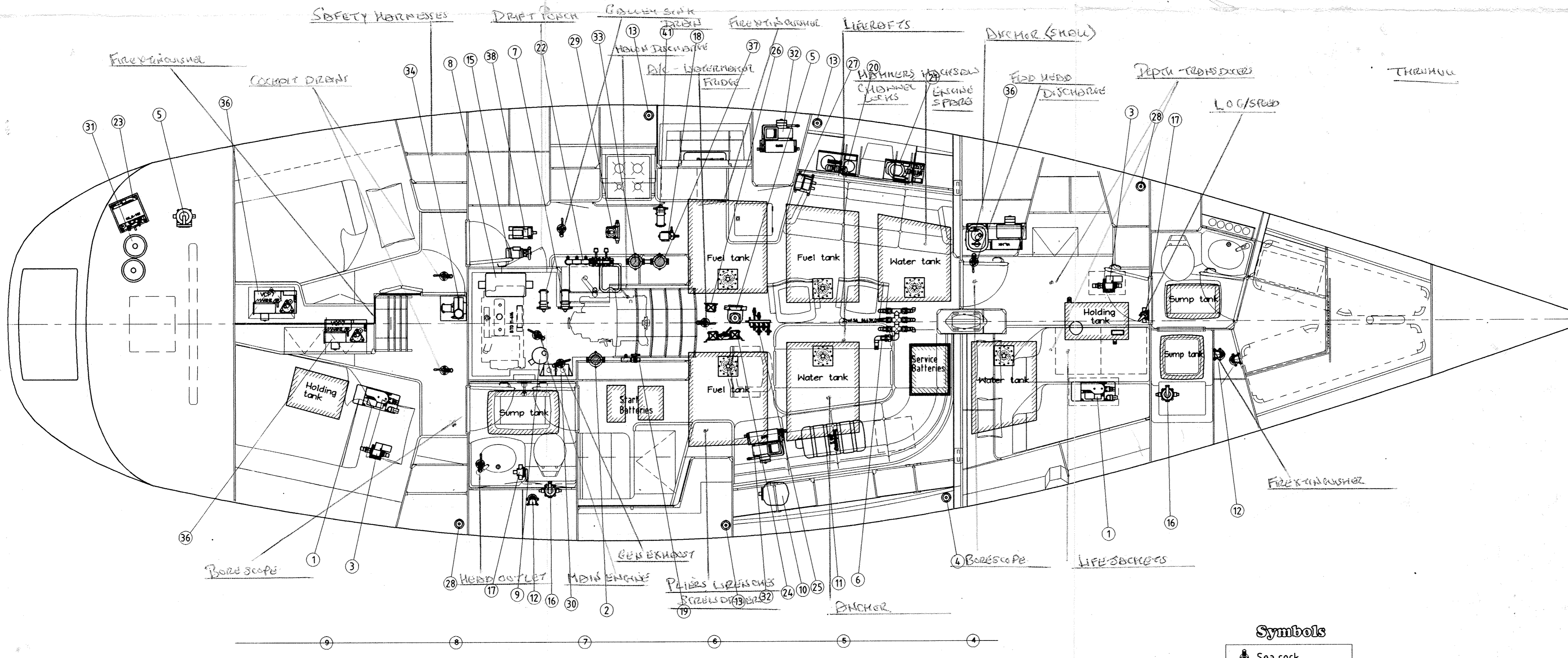
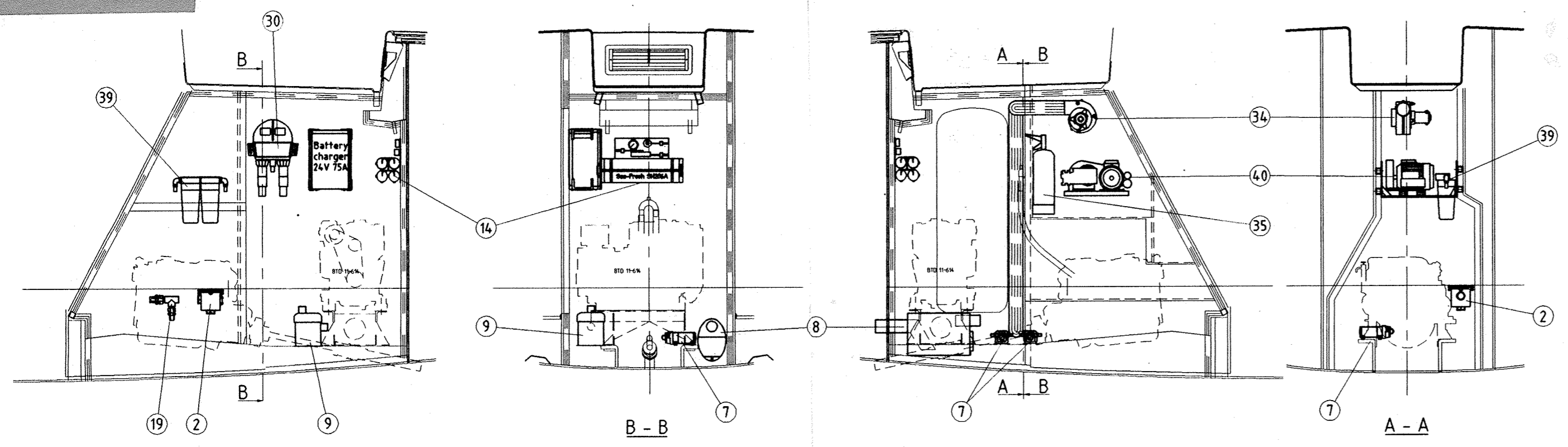




LOUPO STÅLRETT SÄKERHETSKART



**Symbols**

-  Sea cock
-  Foot pump

|  |  |  |    |
|--|--|--|----|
| DECK WASH PUMP   | 42 DECK DISCHARGE FOR HOLDING TANK                               | 28 WATER MAKER MEMBRANES/CONTROL PANEL               | 14 |
| WATER MAKER HIGH PRESSURE PUMP                               | 41 ELECTRIC BILGE PUMP   | 27 FUEL DECK FILL                                    | 13 |
| WATER MAKER PREFILTERS                                       | 40 FUEL FILTER / WATER SEPARATOR FOR DIESEL GEN.                 | 26 ELECTRIC SUMP TANK PUMP                           | 12 |
| FEED PUMP FOR AIRCON UNITS                                   | 39 FUEL TANK SELECTOR VALVE CHEST                                | 25 WATER HEATER                                      | 11 |
| DE-AIRATION BOX  | 38 DOUBLE FUEL FILTER / WATER SEPARATOR FOR MAIN ENGINE          | 24 WATER PRESSURE ACCUMULATOR                        | 10 |
| SELFCONTAINED AIRCON UNIT                                    | 37 AIRCON CONDENSING UNIT  | 23 EXHAUST MUFFLER / WATER LOCK FOR DIESEL GEN. SET  | 9  |
| FIRE EXTINGUISHER  | 36 VALVE CHEST WATERMAKER, AIRCON, REFRUNIT, DECKWASH & FOOTPUMP | 22 EXHAUST MUFFLER / WATER LOCK FOR MAIN ENGINE      | 8  |
| EXTRACTOR BLOWER   | 35 115V REFRUNIT   | 21 WATER PRESSURE PUMP                               | 7  |
| SEAWATER STRAINER, WATERMAKER, REFRUNIT, DECKWASH & FOOTPUMP | 34 ENGINE DRIVEN REFRUNIT  | 20 FRESH WATER VALVE CHEST                           | 6  |
| AIRCON EVAPORATOR/BLOWER UNIT                                | 33 SEA WATER VALVE CHEST FOR MAIN ENGINE & DIESEL GEN. SET       | 19 MANUAL BILGE PUMP                                 | 5  |
| GASBOTTLES   | 32 COOLING WATER PUMP FOR 220V REFRUNIT                          | 18 FRESH WATER DECK FILL                             | 4  |
| GAS/WATER SEPARATOR SILENCER FOR DIESEL GEN.                 | 31 TOILET DIVERTER VALVE   | 17 HOLDING TANK DISCHARGE PUMP                       | 3  |
| DRAIN PUMP FOR FRIDGE & FREEZER                              | 30 MANUAL BACKUP SUMP TANK PUMP                                  | 16 SEAWATER STRAINER FOR MAIN ENGINE & DIESEL GENSET | 2  |
|  | 29 WATER MAKER FEED WATER PUMP                                   | 15 TOILET VACUUM TANK / VACUUM PUMP                  | 1  |

|  |                 |               |      |              |  |                |  |          |  |           |  |      |
|--|-----------------|---------------|------|--------------|--|----------------|--|----------|--|-----------|--|------|
| Fördelning   | E. G. H1. L6. Q | Antal per båt |      | Benämning    |  | Ritn.nr.       |  | Material |  | MTI       |  | Pos. |
| Ritad  | 13.10.1999 RH   | Skala         | 1:30 | Anmärkning   |  |                |  |          |  |           |  |      |
| Gransk./Godk.  |                 |               |      |              |  |                |  |          |  |           |  |      |
| DENNA RITNING ÄR OY NAUTOR AB'S EGENDOM OCH SKALL PÅ BEGRÄNSAT ATERLÄNNAS. DEN FÅR EJ PÅ NÅGOT SÄTT ANVÄNDAS ELLER KOPieras I SIN HELHET ELLER DELVIS UTAN SKRIFTLIGT TILLSTÅND FRÅN OY NAUTOR AB.<br>ALL RIGHTS RESERVED. THIS DRAWING IS THE PROPERTY OF OY NAUTOR AB. USE, MANUFACTURE OR REPRODUCTION IN WHOLE OR IN PART IS PROHIBITED, WITHOUT WRITTEN APPROVAL GIVEN BY OY NAUTOR AB. |                 |               |      |              |  |                |  |          |  |           |  |      |
| Båttyp   | 610/615         | Benämning     |      | Installation |  | Ritningsnummer |  | Ersätter |  | Ersatt av |  |      |
|  |                 |               |      |              |  | 2-51-1054A     |  |          |  |           |  |      |